

1. Table of Contents (This Page)
Created on Tue Feb 11 19:56:56 2014

2. top

3. GND

4. power

5. signal

6. outline

7. plated-drill

8. componentmask

9. soldermask

10. topsilk

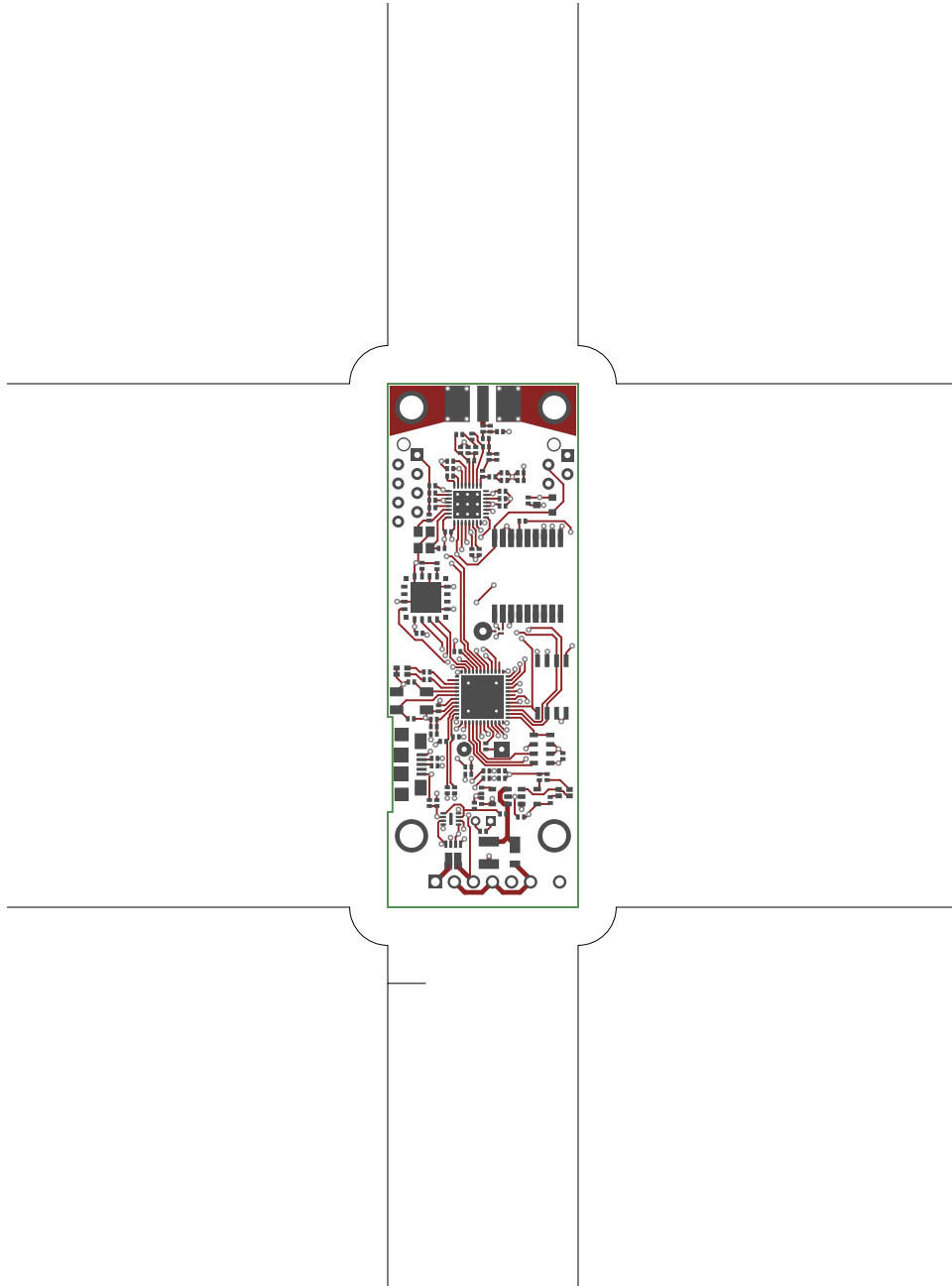
11. bottomsilk

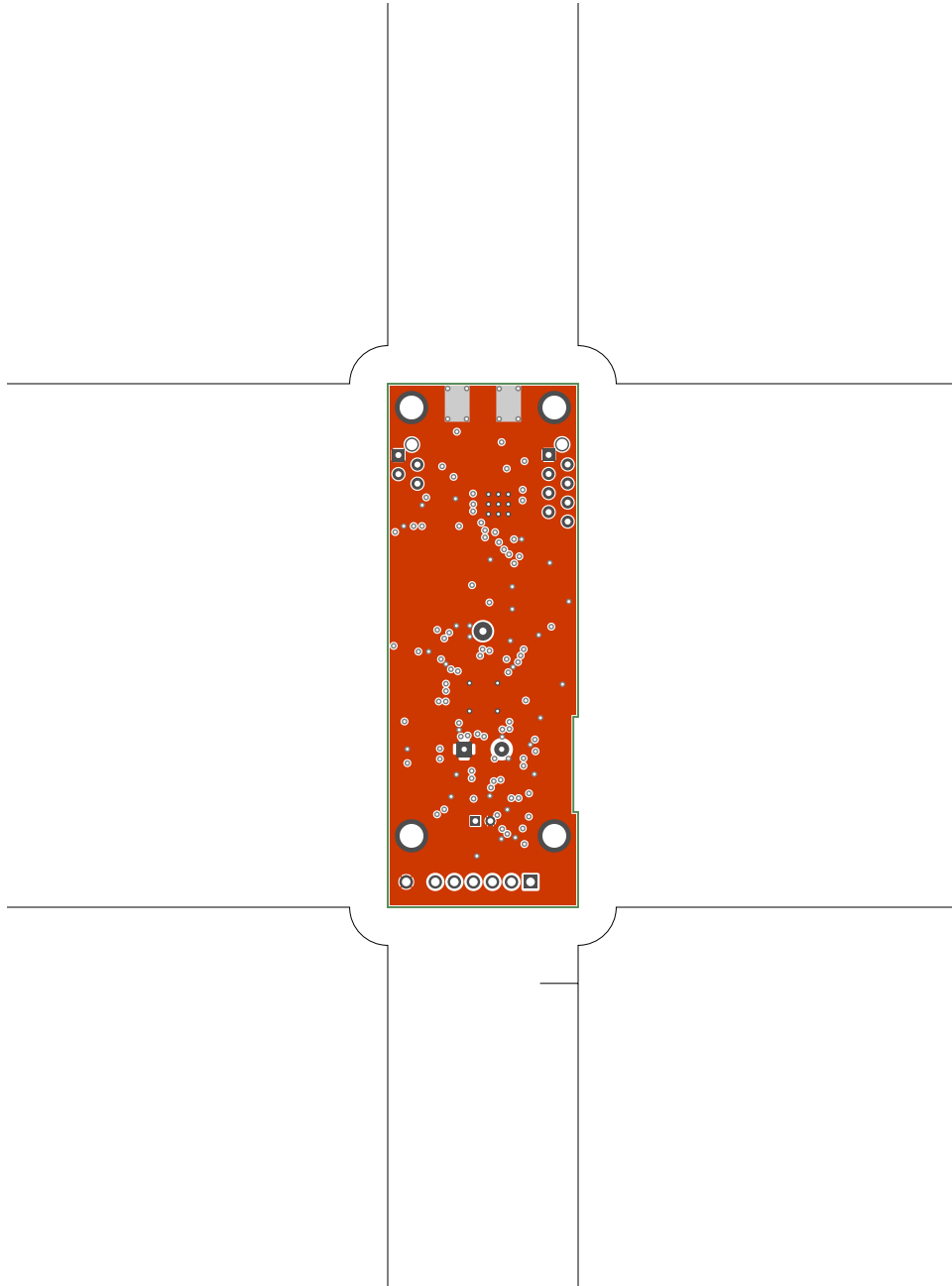
12. toppaste

13. topassembly

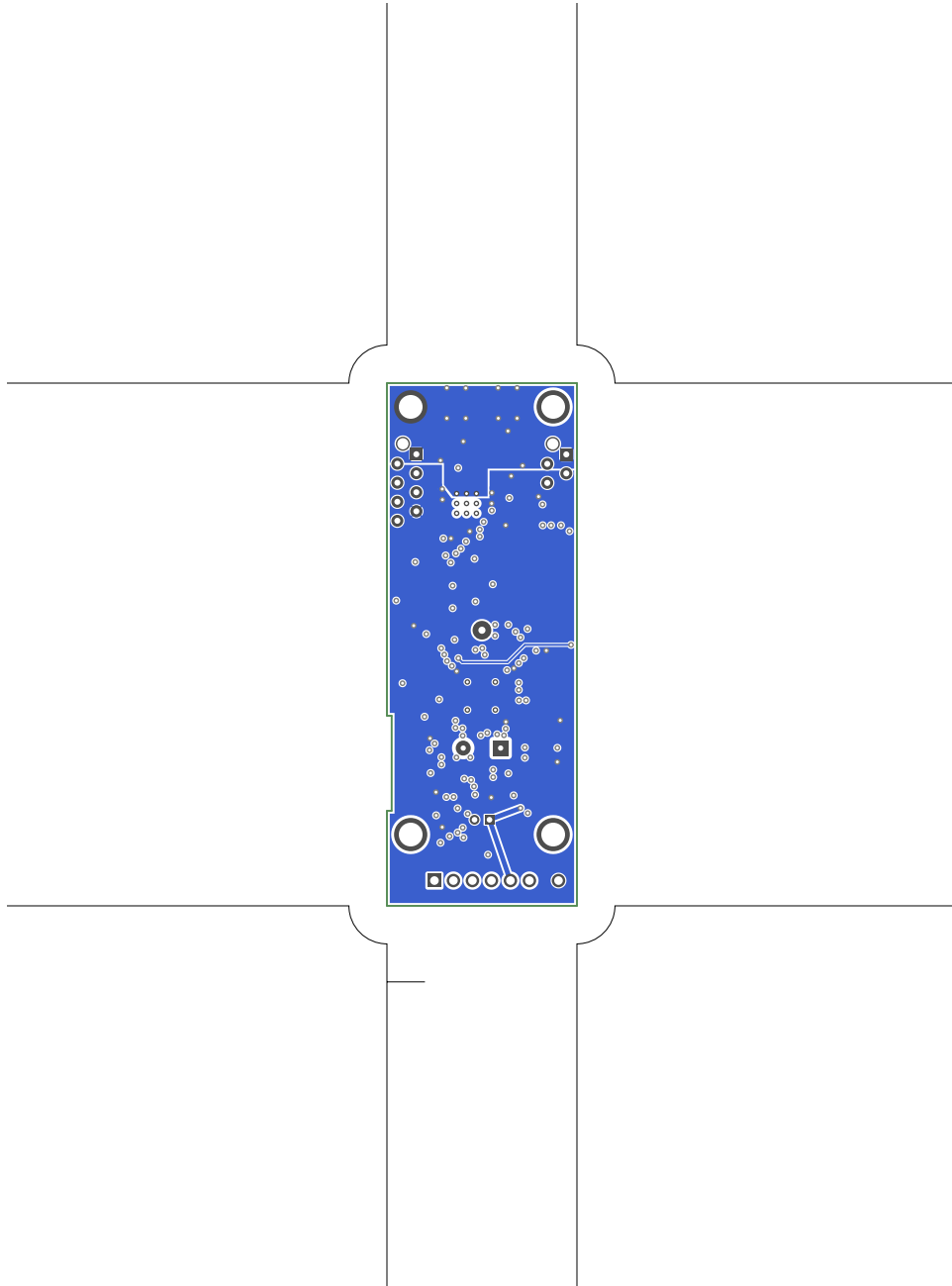
14. bottomassembly

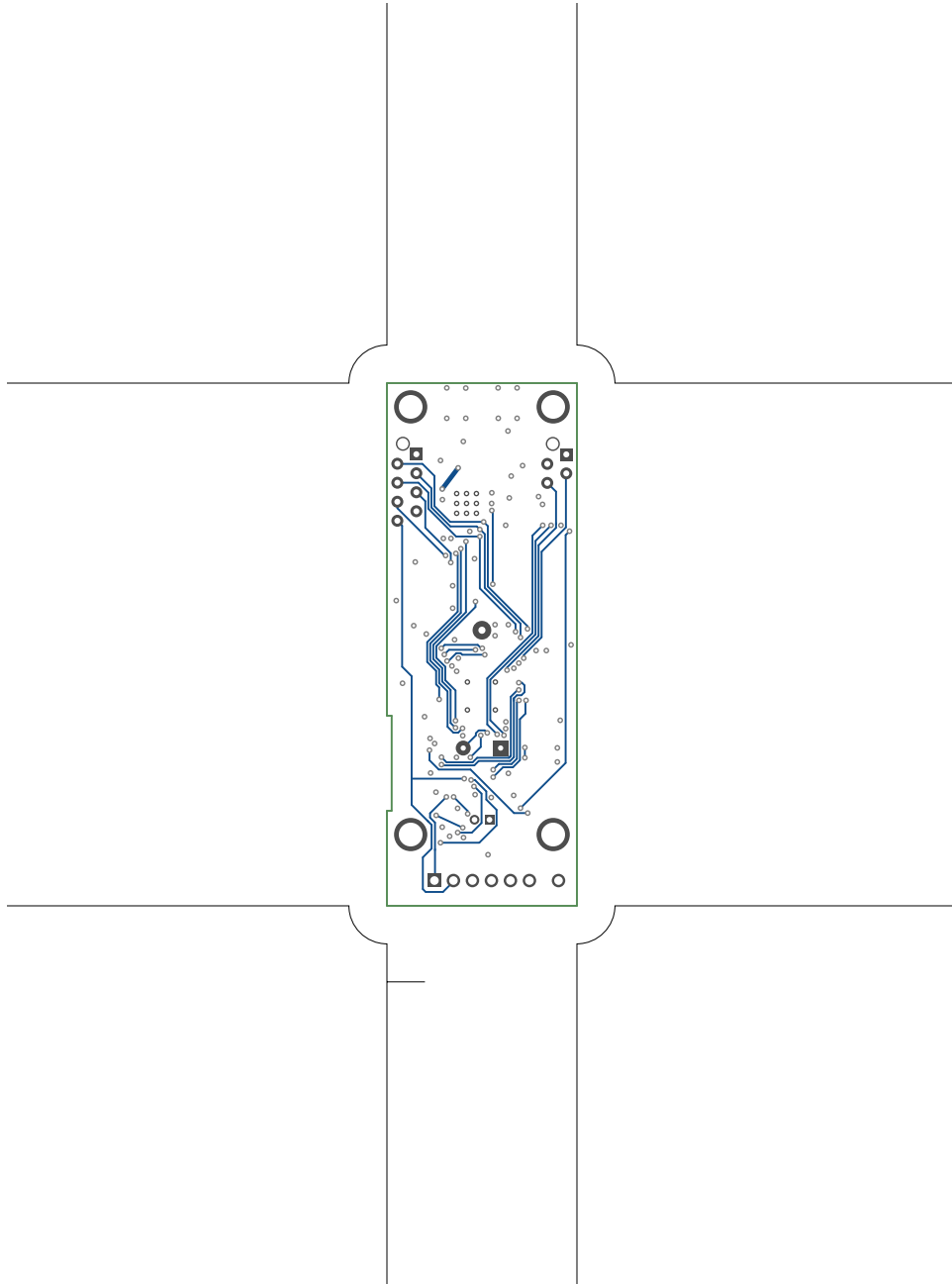
15. fab

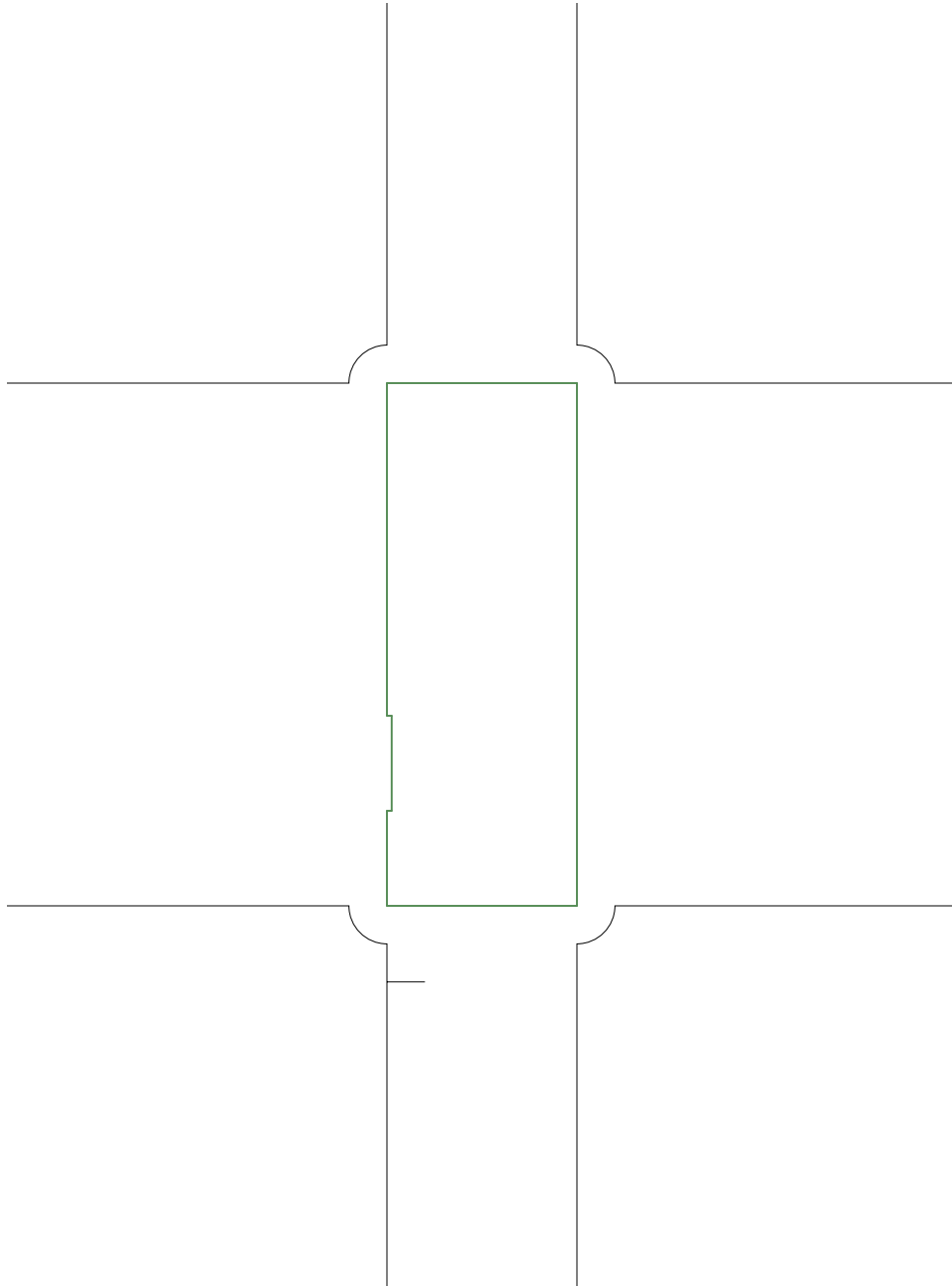


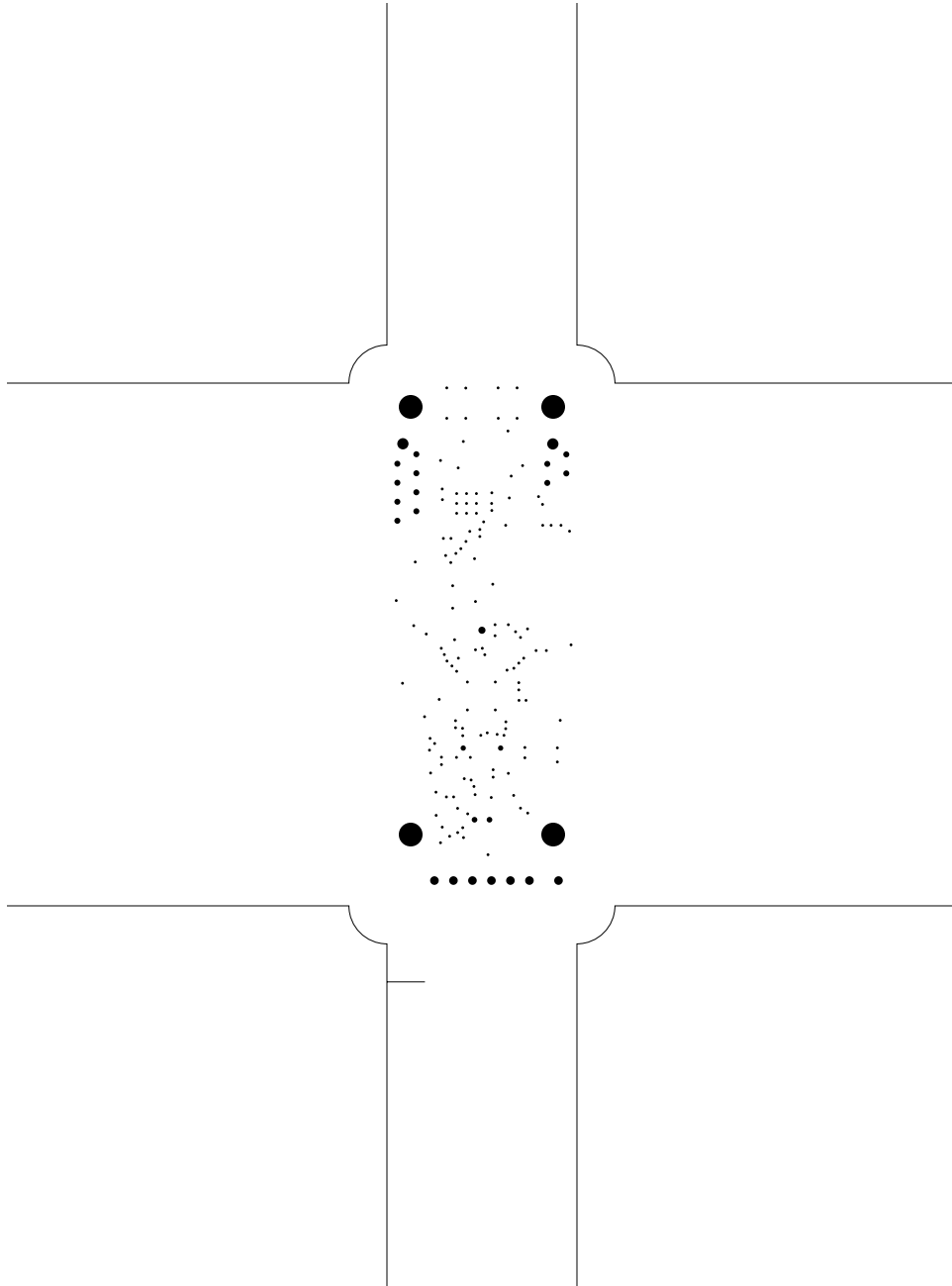


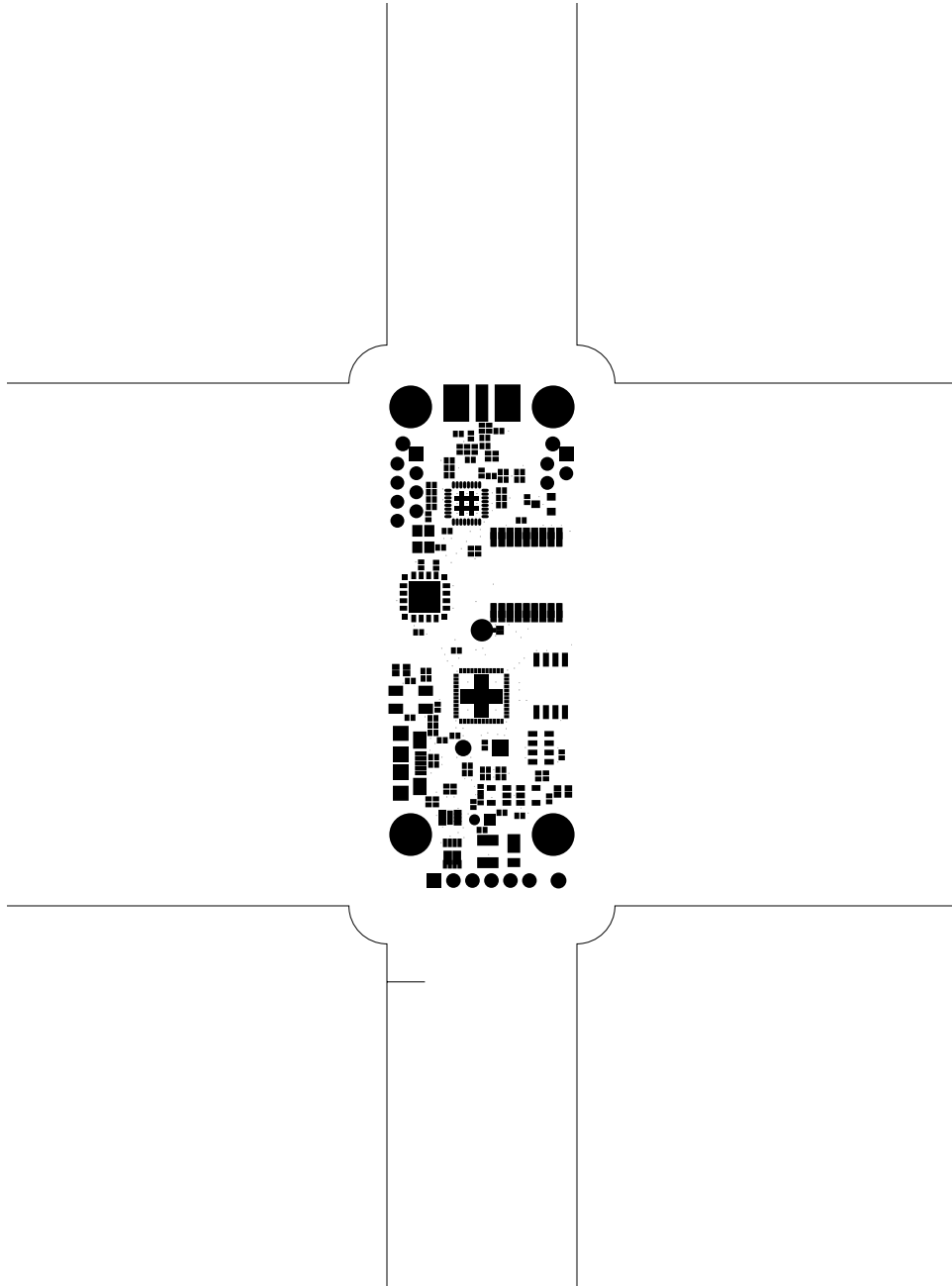
TeleMetrum, bottom (mirrored), scale = 1:1.000
telemetrum.pcb

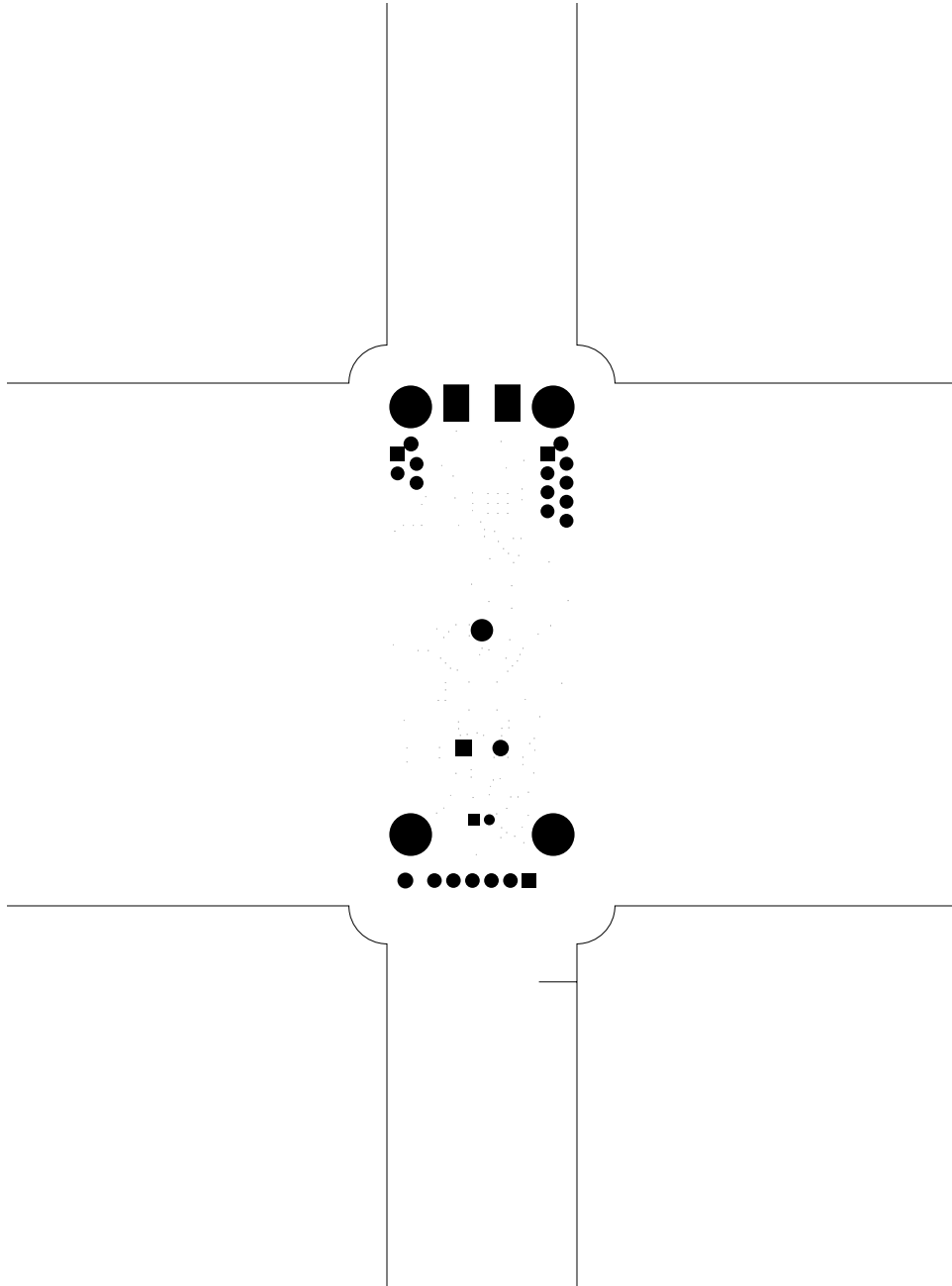


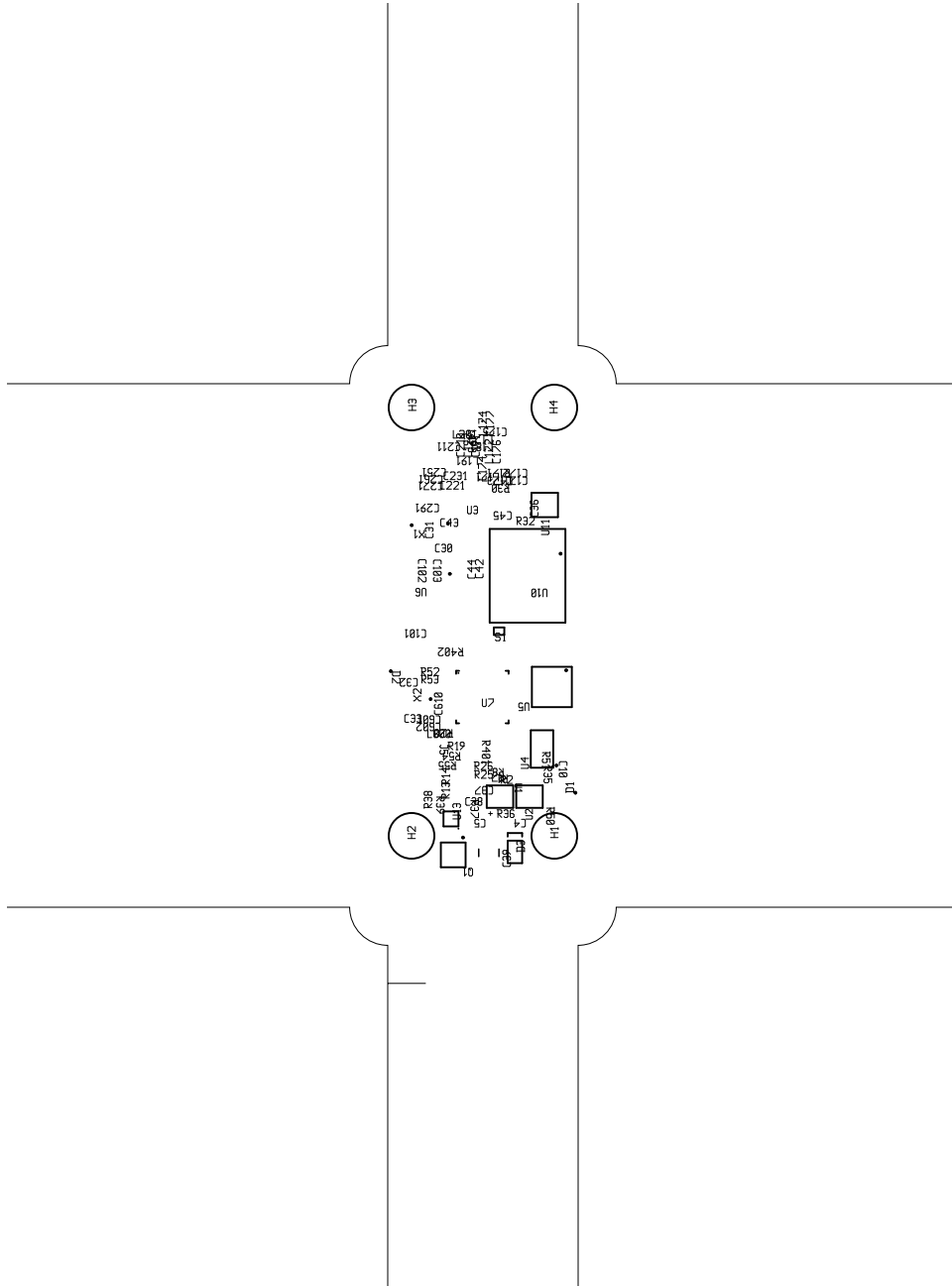


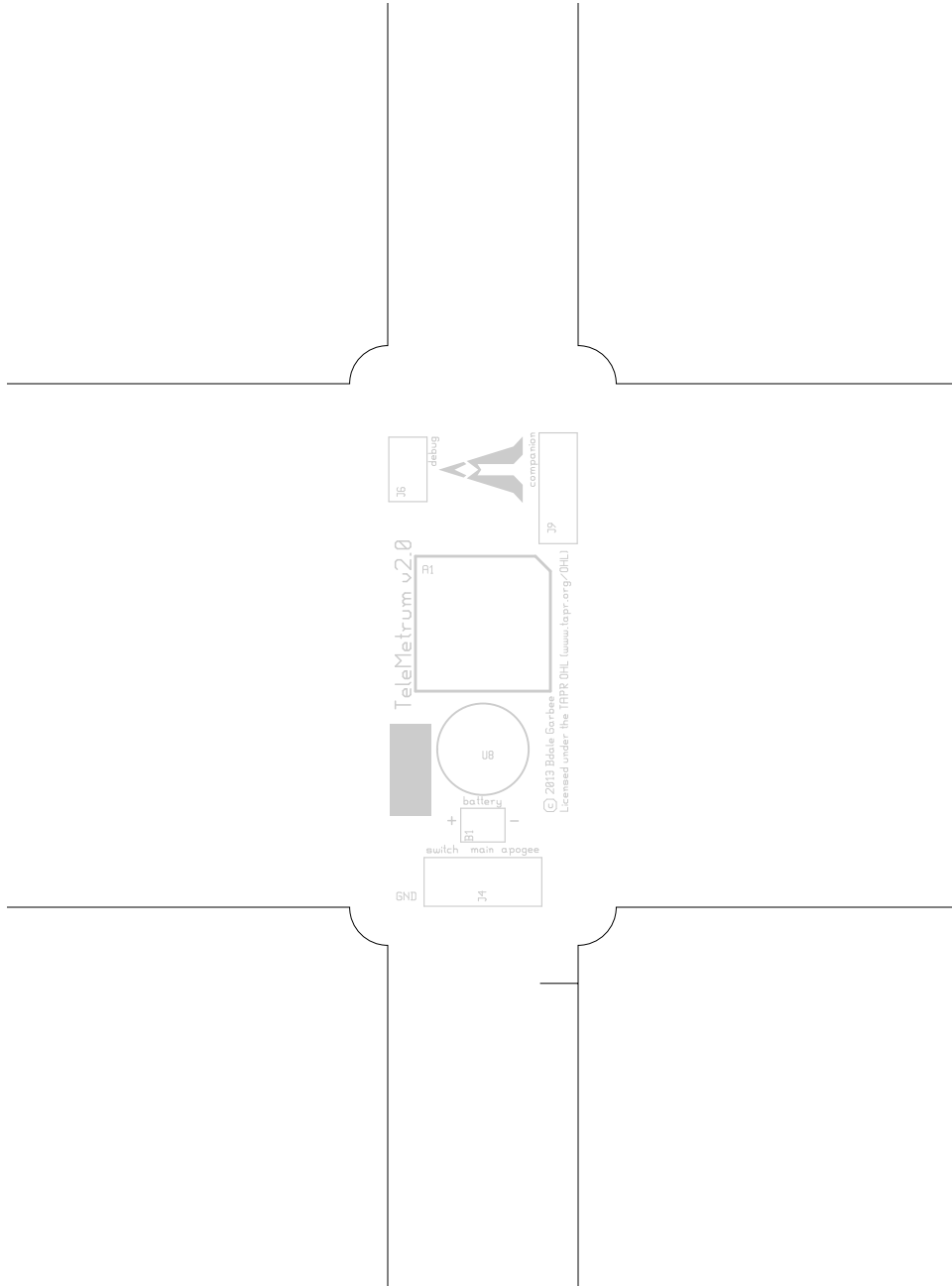




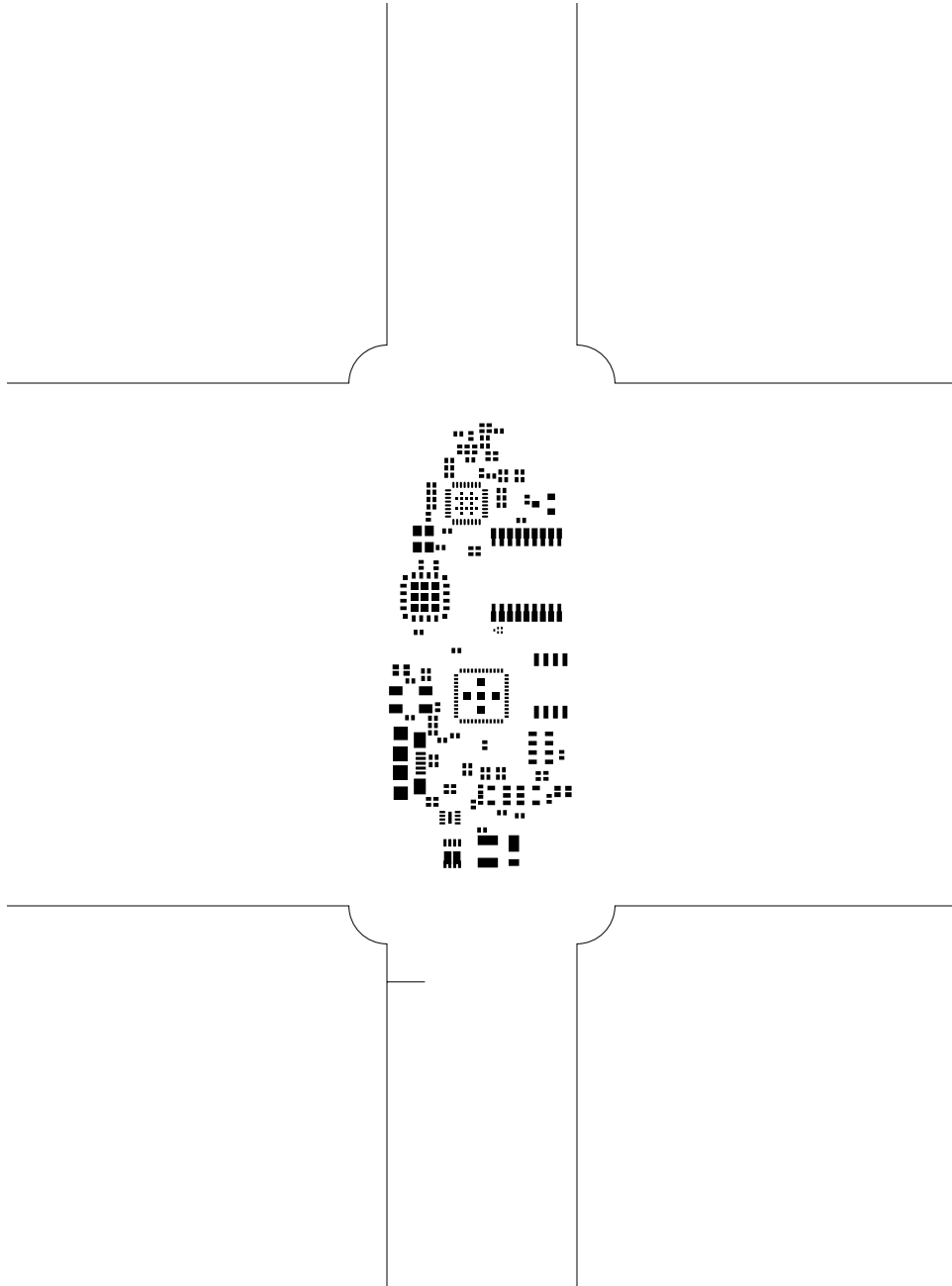


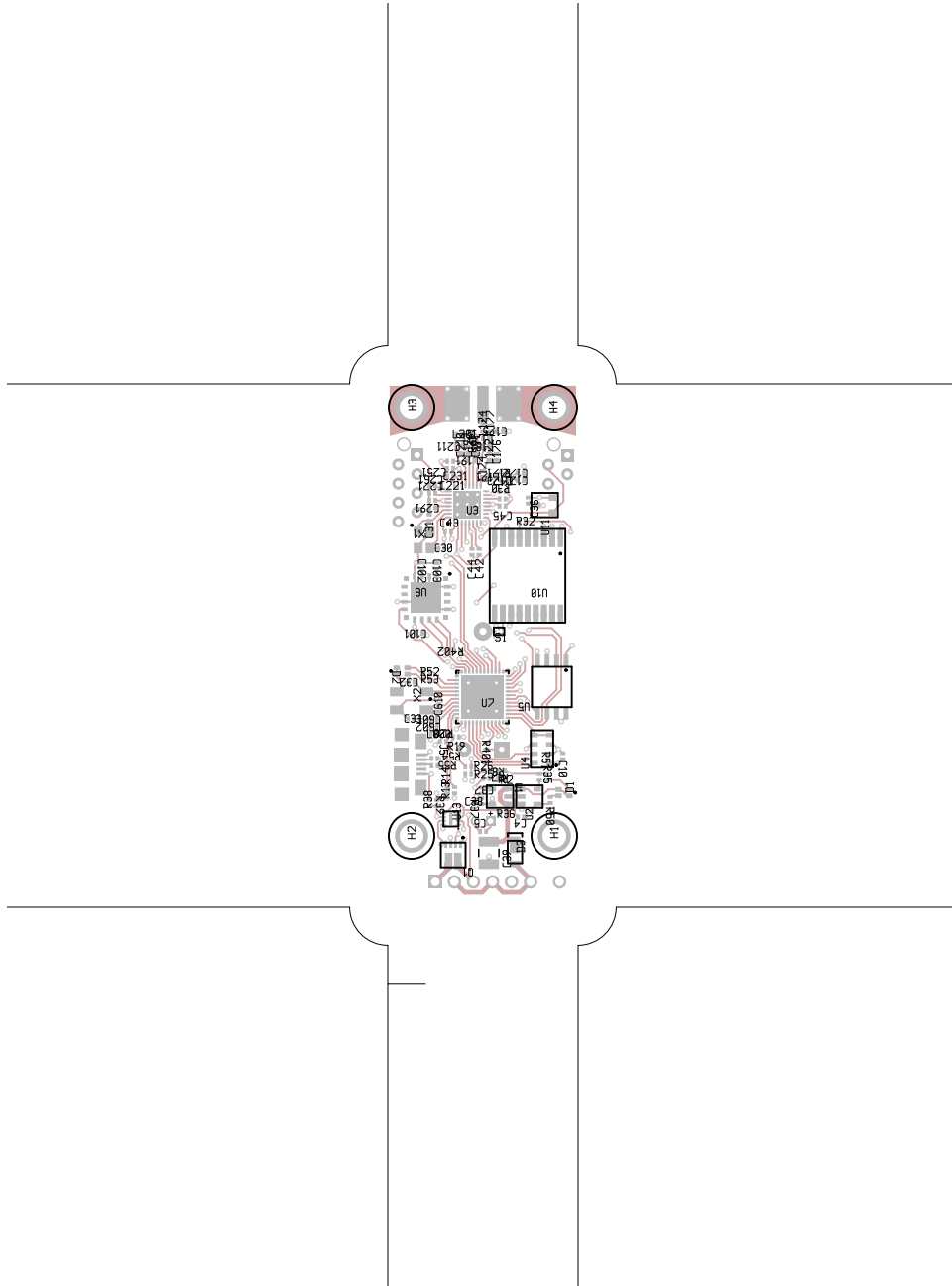


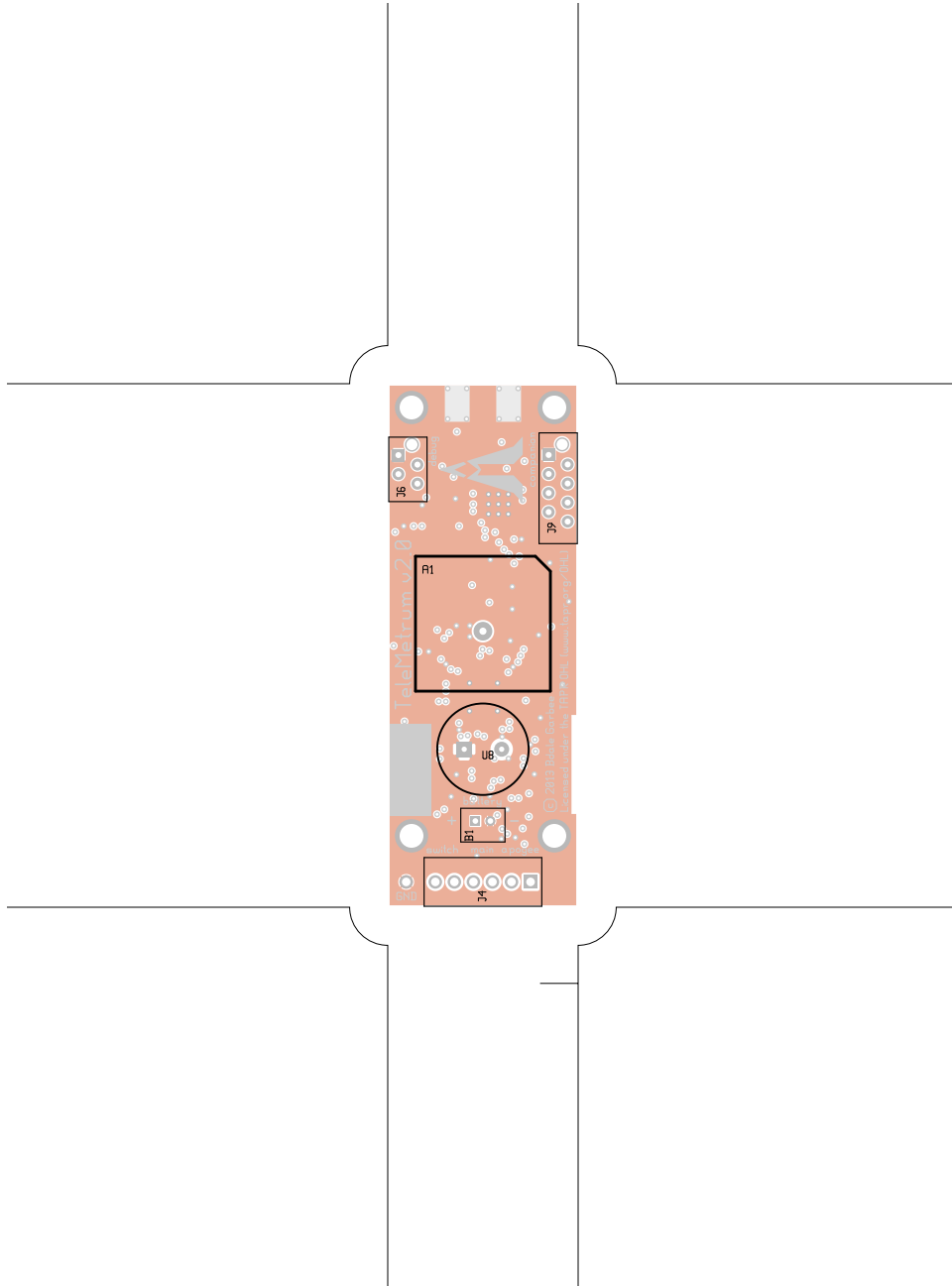




TeMeTrum, bottomsilk (mirrored), scale = 1:1.000
 telemetrum.pcb





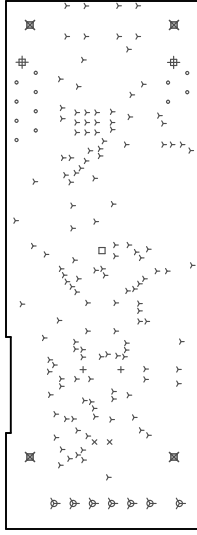


TeleMetrum, bottomassembly (mirrored), scale = 1:1.000
telemetrum.pcb

There are 8 different drill sizes used in this layout, 167 holes total

Symbol	Diam. (Inch)	Count	Plated?
Y	0.015	137	YES
+	0.028	2	YES
x	0.030	2	YES
o	0.032	12	YES
□	0.037	1	YES
ψ	0.045	7	YES
#	0.059	2	YES
⊗	0.125	4	YES

Title: TeleMetrum - Fabrication Drawing
 Author: Keith Packard
 Date: Wed 12 Feb 2014 03:56:56 AM GMT UTC



Board outline is the centerline of this path